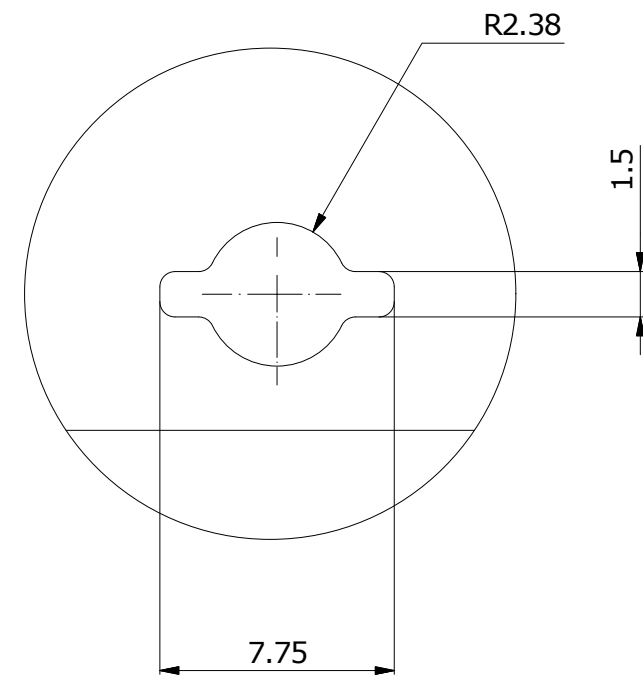
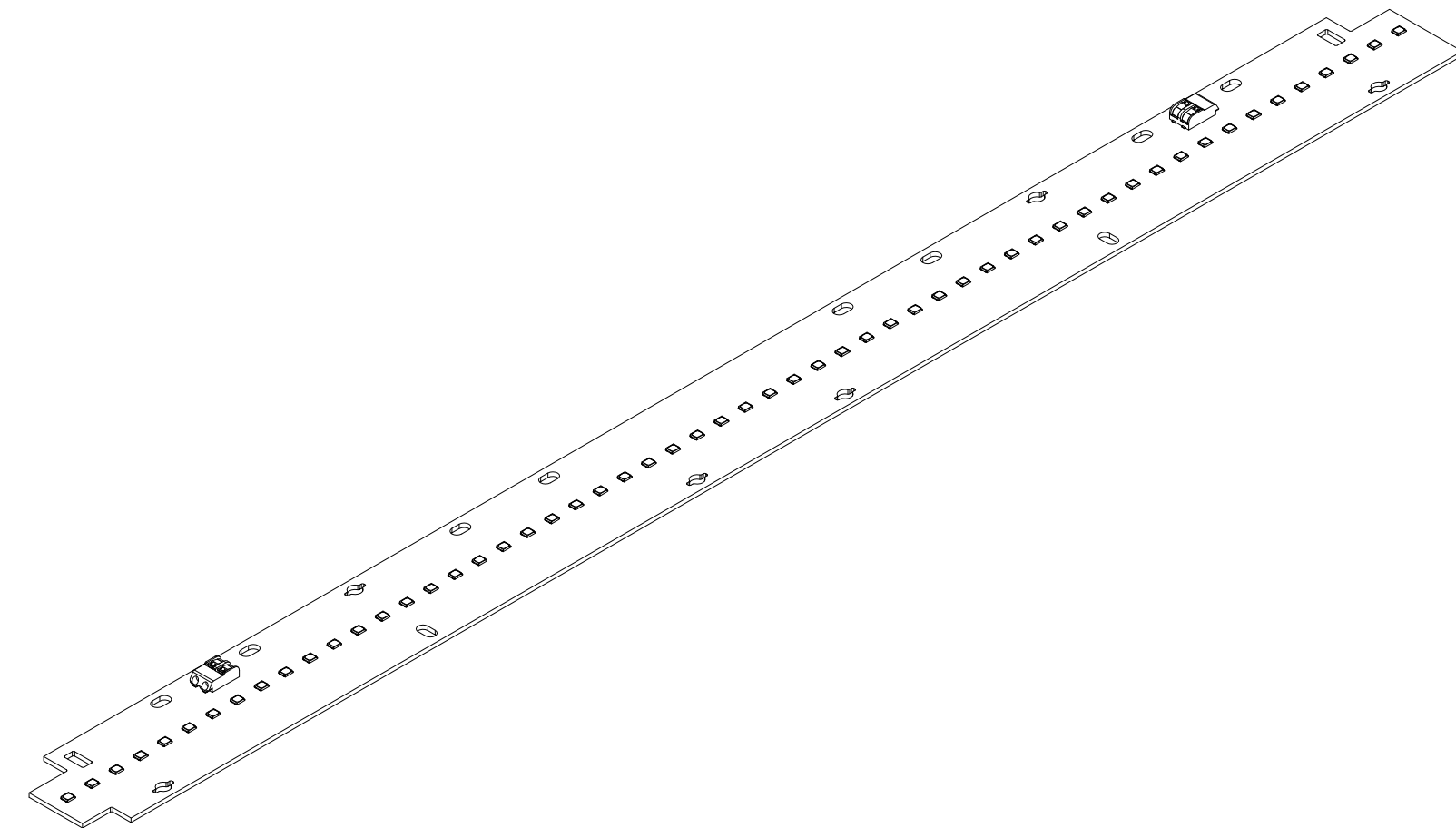
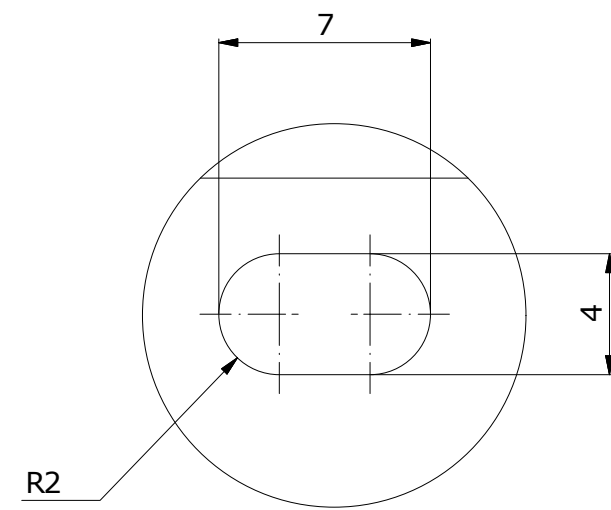


C ( 4 : 1 ) (5x)



E ( 4 : 1 ) (10x)



TOLERANCES UNLESS OTHERWISE STATED	
<200 mm	±0.20 mm
≥ 200mm ≥ 400mm	±0.25 mm
>400 mm ≥600 mm	±0.30 mm
>600 mm	±0.40 mm

UN - D1041		TOLERANCES UNLESS OTHERWISE STATED			
GENERAL ROUGHN.		UNIT	MATERIAL	DIMENSION	ANGLE ±1°
✓		mm			
SCALE 1:1		1st Angle PROJ	TREATMENT	ORDER NO.	QUANT.
CLASS NO.		Fortimo LED Line 2ft MF 1R HV5			2021-07-19
		9290 029 31000			
NAME S.Puchala		SUPERS.	1	SH,SH.	112 - 1
DATA FMT.		PROGR.	Inventor 2017	PLATF.	10
[CAD]		CHECK	DATE 19.07.2021	© Philips Electronics N.V. 2002	